



# 2900 Aluminum Series

## Premium Sliding Patio Door



Polyamide strut  
thermal break system

---

All framing constructed  
with double thermal breaks

---

Double and 1 <sup>3</sup>/<sub>8</sub>"  
triple-glazing options

---

Heavy duty tubular  
meeting rails

---

Pressure equalized  
sill design

---

ENERGY STAR® rated  
for Zone 2 in Canada

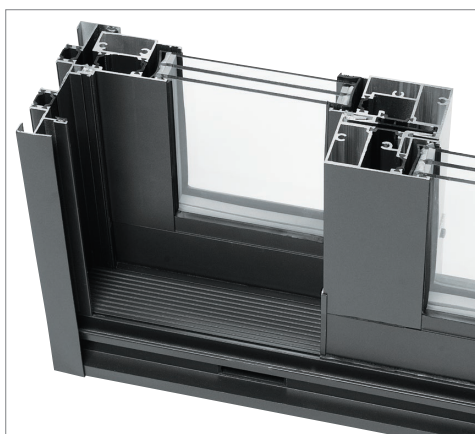
**EFFICIENCY. QUALITY. HIGH VALUE.**

# 2900 Aluminum Series

## The 2900 Aluminum Series Thermal Door

Innovative **2900 Aluminum Series** patio doors offer superior thermal and structural advantages. They provide a level of performance unparalleled in aluminum sliding doors. Enjoy lower maintenance with Sunview engineered quality, styling and beauty. Plus, enhanced insulation helps conserve energy and helps your heating bills in cold weather. Aluminum doors also play a vital role in controlling temperatures in the summer.

Choose the **2900 Aluminum Series** Thermal Patio Door for strength, lasting value, improved thermal technology, and a wide range of flexible configurations.



# Features and Options

## 2900 Performance

Argon filled, Triple-glazed  
Low-E achieves a U-factor of 1.42  
W/m<sup>2</sup>·K (0.25 Btu/hr·ft<sup>2</sup>·°F)

Meets Zone 2  
ENERGY STAR® rating in Canada

Meets NAFS  
deflection and structural  
requirements at CW-PG40  
performance grade level

Provides water resistance at  
580 Pa (12 psf)

## Insulating Glass

One-inch clear tempered  
sealed insulating glass,  
or upgrades to triple-glazed  
1<sup>3</sup>/<sub>8</sub>" argon-filled Low-E  
coated glass for greater  
energy performance and  
cold climate condensation  
resistance. Colour tinted  
or reflective glass meets  
the most demanding  
architectural specifications.

*Super Spacer®*



## Hardware Options

Stylish white or black contemporary  
handles with a single-point lock  
come standard. Optional twin-point  
key locks, and a satin nickel handle  
finish are also available.



White  
Finish



Satin  
Nickel  
(Optional)

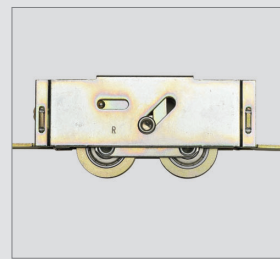


Black  
Finish



## Interlock System

features wide meeting  
rails with double  
weather stripping for  
excellent water and  
air tightness.



## Precision Adjustable

**Rollers** are whisper  
quiet and high-quality  
adjustable rollers  
installed in the active  
panel.

## Optional Exterior

**Colours** Sunview's  
patio doors boast a  
wide range of exterior  
colour options that  
feature a durable finish  
that is also UV stable.



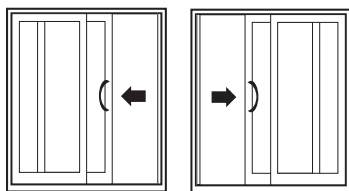




# 2900 Aluminum Series

## Dimensions Door/Panel Configurations and Finished Sizes (Exterior view)

### 2 Panels

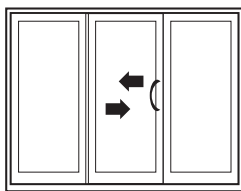


OX-Slide Left

XO-Slide Right

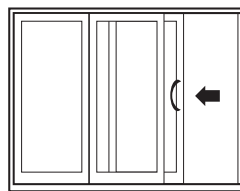
Product Code	Frame Size
<b>50610</b>	<b>58<sup>1</sup>/<sub>4</sub> × 80<sup>3</sup>/<sub>8</sub></b>
<b>60610</b>	<b>70<sup>1</sup>/<sub>4</sub> × 80<sup>3</sup>/<sub>8</sub></b>
<b>80610</b>	<b>94<sup>1</sup>/<sub>4</sub> × 80<sup>3</sup>/<sub>8</sub></b>

### 3 Panels



OXO-Slide R to L or OZO-Slide L to R

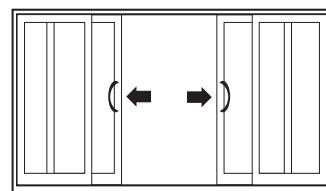
Product Code	Frame Size
<b>76610</b>	<b>86<sup>3</sup>/<sub>4</sub> × 80<sup>3</sup>/<sub>8</sub></b>
<b>90610</b>	<b>104<sup>3</sup>/<sub>4</sub> × 80<sup>3</sup>/<sub>8</sub></b>
<b>120610</b>	<b>140<sup>3</sup>/<sub>4</sub> × 80<sup>3</sup>/<sub>8</sub></b>



XOO-Slide R or OOX Slide L

Product Code	Frame Size
<b>76610</b>	<b>87<sup>1</sup>/<sub>8</sub> × 80<sup>3</sup>/<sub>8</sub></b>
<b>90610</b>	<b>105<sup>1</sup>/<sub>8</sub> × 80<sup>3</sup>/<sub>8</sub></b>
<b>120610</b>	<b>141<sup>1</sup>/<sub>8</sub> × 80<sup>3</sup>/<sub>8</sub></b>

### 4 Panels



OXXO-Slide R and Slide L from Centre

Product Code	Frame Size
<b>100610</b>	<b>115<sup>1</sup>/<sub>4</sub> × 80<sup>3</sup>/<sub>8</sub></b>
<b>120610</b>	<b>139<sup>1</sup>/<sub>4</sub> × 80<sup>3</sup>/<sub>8</sub></b>
<b>160610</b>	<b>187<sup>1</sup>/<sub>4</sub> × 80<sup>3</sup>/<sub>8</sub></b>

## Performance 2900 Series Patio Door meets **NAFS/Class CW-PG40** Type SD

Standard	Air Leakage	Water Penetration Resistance	Design Pressure
AAMA/WDMA/CSA 101/1.S.2/A440-11 and A440S1-09	A3 - 0.1 L/s·m <sup>2</sup>	580 Pa (12 psf)	±1920 Pa (40 psf)

Distributed by:



Our products meet the ENERGY STAR® program guidelines to help protect the environment through superior energy efficiency.