



# 1200 Aluminum Series

## Thermal-Control Sliding Patio Door



---

Long-lasting, reliable  
operation, high security

---

Narrow sight lines  
maximize view

---

Slim frames complement  
modern architectural styles

---

Durable factory-applied  
color options

---

Easy to install pre-fabricated  
knockdown kits

**EFFICIENCY. QUALITY. HIGH VALUE.**

# 1200 Aluminum Series



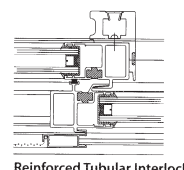
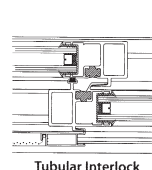
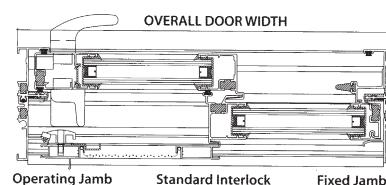
The **Sunview Aluminum 1200 Series**, the most advanced and flexible aluminum patio door in today's demanding market, is perfect for architectural applications, since its customization options are extensive. Whether it's colour, sill finishes, glass or hardware, the 1200 Series offers the flexibility to comply with virtually any building requirement.

## Design Flexibility

In the same perimeter frame, doors can be configured up to six panels wide with fixed or operable panels and coupling members that join larger doors together. They also fill openings or create continuous glass façades. Transoms and fixed sidelites also complete the advanced design.

## Draft Protection

To reduce air flow through doors, full perimeter double-fin seal weather stripping creates comfortable, draft-free living spaces.



## Insulating Glass

One-inch clear tempered sealed insulating glass, or upgrades to argon-filled Low-E coated glass for greater energy performance and cold climate condensation resistance. Colour tinted or reflective glass meets the most demanding architectural specifications.

*Super Spacer®*

Stays cool in summer



Stays warm in winter

## Hardware

Fully adjustable lock set handles satisfy most aesthetic tastes and budgets.

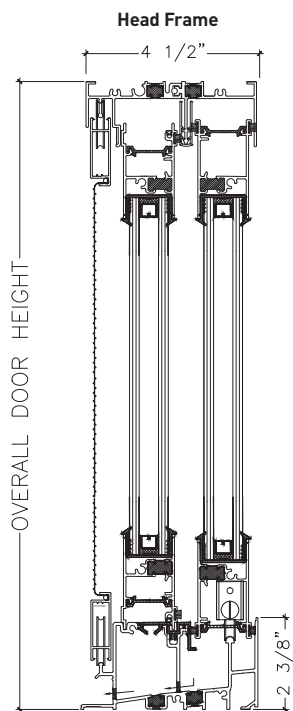
Optional security bars and key locks provide added protection. Guardian locks provide security while leaving doors open for ventilation.



[www.sunviewdoors.com](http://www.sunviewdoors.com)



# Features and Options



## Rain Protection

Varying sill heights in mild to severe climates prevent water penetration.

## Architectural Finishes

Electrostatically baked enamel in white or dark bronze - and customized enamel, fluorocarbon, anodized and high-performance finishes.

## Dual Split Finish Option

Sunview's innovative design permits different finishes at nominal costs on door insides and outsides - an advantage to owners and architects alike.

## Sill Finish Options

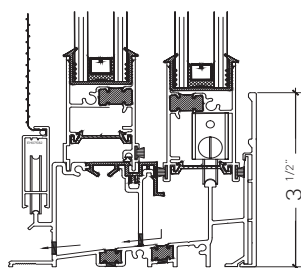
Painted or anodized sills with stainless steel tracks, a custom feature, or standard mill finished aluminum.

## Transoms and Sidelites

Joining fixed glazing mates with sliding door systems allow greater flexibility for aesthetics and architectural applications.

## Easy to Install

For trouble-free installation, frames and panels, are shipped in pre-fabricated knockdown kits, and contain hardware and instructions.



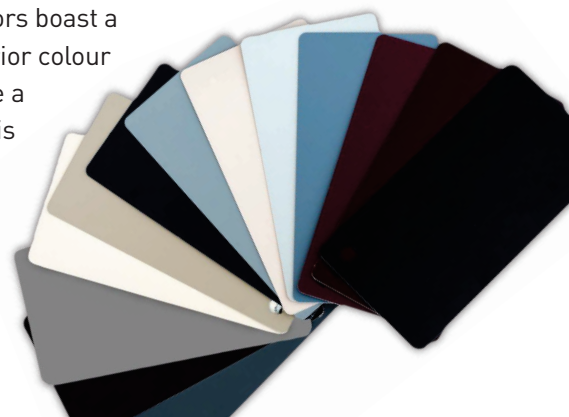
## Easy Operation

Rolling quietly and smoothly on adjustable tandem steel ball bearing rollers, independently adjustable door panels achieve ease-of-operation while protecting against the elements. For coastal climates, order stainless steel rollers.



## Optional Exterior Colours

Sunview's patio doors boast a wide range of exterior colour options that feature a durable finish that is also UV stable.



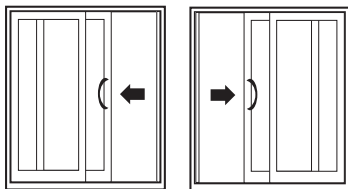


# 1200 Series

## Thermal-Control Sliding Patio Door

### Dimensions Door/Panel Configurations and Finished Sizes (Exterior view)

#### 2 Panels

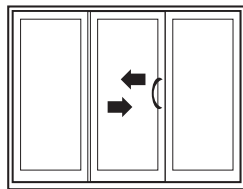


OX-Slide Left

XO-Slide Right

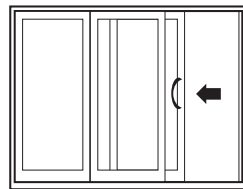
| Product Code | Frame Size         |
|--------------|--------------------|
| <b>5068</b>  | <b>59 x 79 1/2</b> |
| <b>6068</b>  | <b>71 x 79 1/2</b> |
| <b>8068</b>  | <b>95 x 79 1/2</b> |

#### 3 Panels



OXO-Slide R to L or OZO-Slide L to R

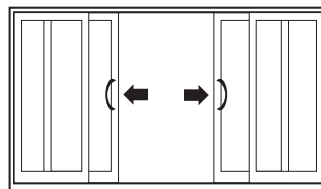
| Product Code | Frame Size              |
|--------------|-------------------------|
| <b>7668</b>  | <b>88 7/8 x 79 1/2</b>  |
| <b>9068</b>  | <b>106 7/8 x 79 1/2</b> |
| <b>12068</b> | <b>142 7/8 x 79 1/2</b> |



XOO-Slide R or OOX Slide L

| Product Code | Frame Size              |
|--------------|-------------------------|
| <b>7668</b>  | <b>89 1/4 x 79 1/2</b>  |
| <b>9068</b>  | <b>107 1/4 x 79 1/2</b> |
| <b>12068</b> | <b>143 1/4 x 79 1/2</b> |

#### 4 Panels



OXXO-Slide R and Slide L from Centre

| Product Code | Frame Size              |
|--------------|-------------------------|
| <b>10068</b> | <b>118 1/4 x 79 1/2</b> |
| <b>12068</b> | <b>142 1/4 x 79 1/2</b> |
| <b>16068</b> | <b>190 1/4 x 79 1/2</b> |

### Performance

|                                    | Configuration | Test Standard                                     | Air Leakage Rating | Water Penetration Resistance | Design Pressure    | Reinforcement Details   |
|------------------------------------|---------------|---|--------------------|------------------------------|--------------------|---|
| <b>R-PG55</b> Type SD-Sill 2-3/8"  | OX / XO       | AAMA/WDMA/CSA 101/I.S.2/A440-11 and CSA A440S1-09 | A3 - 0.4 L/s-m²    | 440 Pa (9.2 psf)             | ±2640 Pa (±55 psf) | Standard Interlock  |
| <b>LC-PG50</b> Type SD-Sill 2-1/4" | OX / XO       | AAMA/WDMA/CSA 101/I.S.2/A440-11 and CSA A440S1-09 | A2 - 0.6 L/s-m²    | 400 Pa (8.3 psf)             | ±2400 Pa (±50 psf) | Heavy-Duty Interlock  |
| <b>LC-PG55</b> Type SD-Sill 2-1/4" | OX / XO       | AAMA/WDMA/CSA 101/I.S.2/A440-11 and CSA A440S1-09 | A2 - 0.6 L/s-m²    | 400 Pa (8.3 psf)             | ±3600 Pa (±75 psf) | Heavy-Duty Interlock<br>J Reinforcement-Lock Stile                              |
| <b>LC-PG30</b> Type SD-Sill 2-3/8" | OX / XO       | AAMA/WDMA/CSA 101/I.S.2/A440-11 and CSA A440S1-09 | A3 - 0.5 L/s-m²    | 440 Pa (9.2 psf)             | ±1440 Pa (±30 psf) | Heavy-Duty Interlock  |
| <b>LC-PG30</b> Type SD-Sill 3-1/2" | OX / XO       | AAMA/WDMA/CSA 101/I.S.2/A440-11 and CSA A440S1-09 | A3 - 0.5 L/s-m²    | 720 Pa (15 psf)              | ±1440 Pa (±30 psf) | Heavy-Duty Interlock  |
| <b>CW-PG50</b> Type SD-Sill 3-1/2" | OX / XO       | AAMA/WDMA/CSA 101/I.S.2/A440-11 and CSA A440S1-09 | A2 - 0.6 L/s-m²    | 720 Pa (15 psf)              | ±2400 Pa (±50 psf) | Heavy-Duty Interlock<br>J Reinforcement-Lock Stile<br>P Reinforcement-Interlock |
| <b>AW-PG50</b> Type SD-Sill 3-1/2" | OX / XO       | AAMA/WDMA/CSA 101/I.S.2/A440-08 and CSA A440S1-09 | A2 - 1.4 L/s-m²    | 720 Pa (15 psf)              | ±2400 Pa (±50 psf) | Heavy-Duty Interlock<br>J Reinforcement-Lock Stile<br>P Reinforcement-Interlock |
| <b>R-PG40</b> Type SD-Sill 2-3/8"  | OXO           | AAMA/WDMA/CSA 101/I.S.2/A440-11 and CSA A440S1-09 | A3 - 0.4 L/s-m²    | 440 Pa (9.2 psf)             | ±1920 Pa (±40 psf) | Heavy-Duty Interlock  |

Distributed By:



[www.sunviewdoors.com](http://www.sunviewdoors.com)